

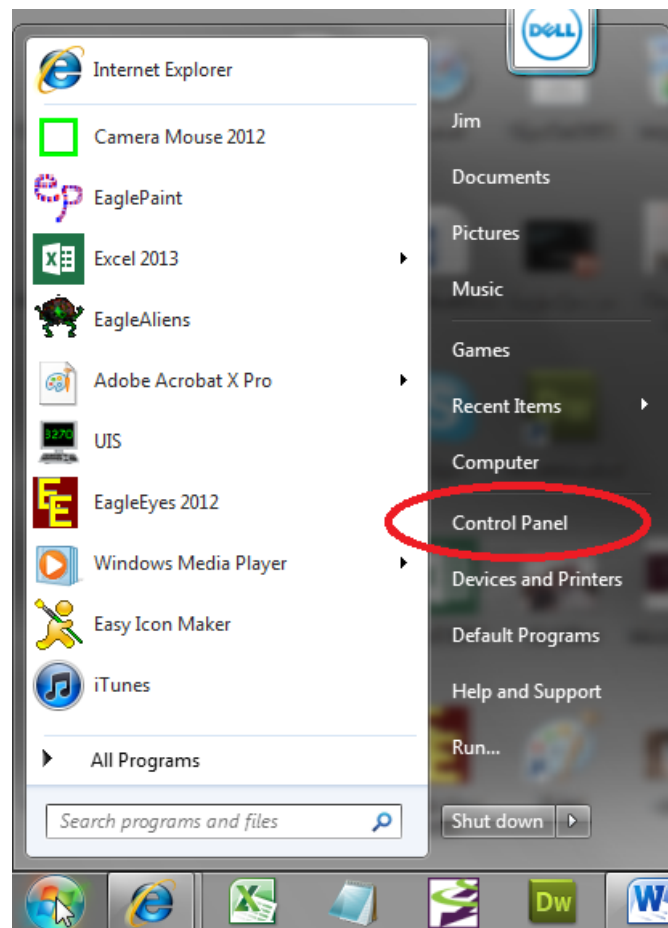
# Making the Mouse Pointer Larger and Easier to See

James Gips, September 2012

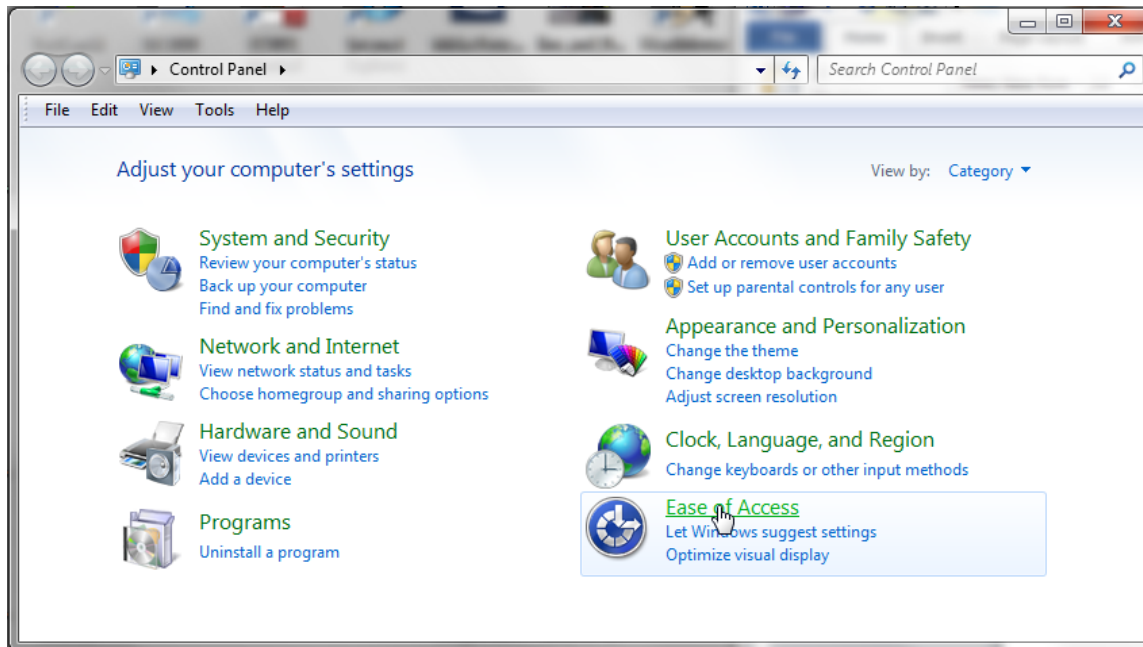
Some people report “losing” the mouse pointer on the screen when using Camera Mouse.

You can make the mouse pointer larger than usual and thus easier to see using the Windows Control Panel. (These instructions are for my Windows 7 Home Premium. Other versions of Windows are similar but may not be exactly the same.)

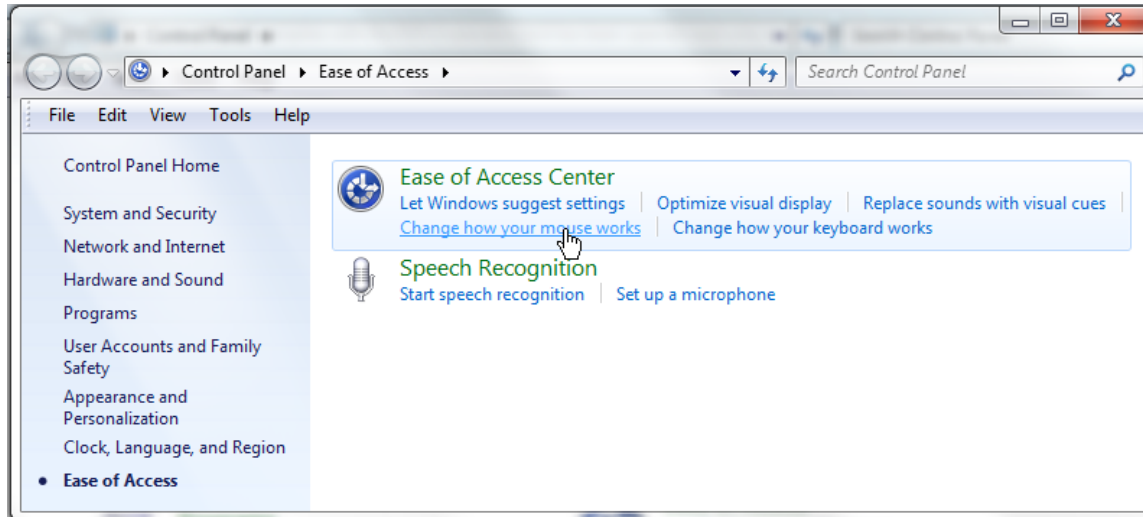
In the Windows menu select Control Panel



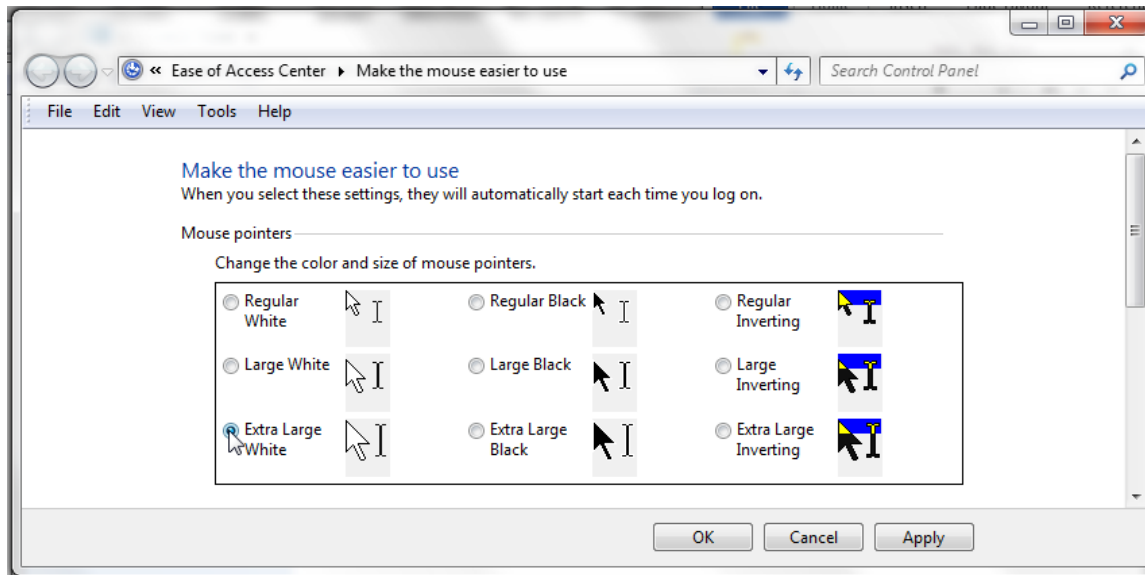
In the Control Panel select Ease of Access.



In Ease of Access select Change how your mouse works.



Then select the size and type of mouse pointer you would like



And click OK.

This should make the mouse pointer more visible and Camera Mouse easier to use.